

# Scrutiny Board Meeting

Tuesday, 6 December 2022

Dear Councillor

## SCRUTINY BOARD - TUESDAY, 6TH DECEMBER, 2022

I am now able to enclose, for consideration at next Tuesday, 6th December, 2022 meeting of the Scrutiny Board, the following presentation that was unavailable when the agenda was printed.

Agenda No	Item
-----------	------

7	<b><u>Levelling Up including Investment Zones</u></b> (Pages 3 - 24)
---	--

[To receive a presentation Levelling Up].

If you have any queries about this meeting, please contact the democratic support team:

**Contact** Martin Stevens

**Tel** 01902 550947

**Email** [martin.stevens@wolverhampton.gov.uk](mailto:martin.stevens@wolverhampton.gov.uk)

**Address** Scrutiny Office, Civic Centre, 1st floor, St Peter's Square,  
Wolverhampton WV1 1RL

Encs

This page is intentionally left blank



# Levelling Up

## Scrutiny Board

6 December 2022

Page 3

Agenda Item No: 7

[wolverhampton.gov.uk](http://wolverhampton.gov.uk)



# Context

July 2019	Future High Streets shortlist
September 2019	Towns Fund prospectus launched
March 2021	Towns Fund award announced
May 2021	Future High Streets Funding announced
October 2021	Levelling Up Fund Round 1 announced
<b>February 2022</b>	<b>Levelling Up White Paper published</b>
August 2022	Deadline for Levelling Up Fund Round 2 bids
2 October 2022	Investment Zones launched
14 October 2022	Investment Zones Expression of Interest Submitted
17 November 2022	Autumn Statement – Investment Zones change in approach
December 2022 TBC	Levelling Up Fund Round 2 awards announced



**LEVELLING  
— UP —**

Levelling Up the United Kingdom  
Executive Summary

# Context

The Levelling Up White Paper (February 2022):

- Outlined a commitment from Government to reduce inter regional inequality
- Underpinned by 12 'Mission' statements to measure change and progress
- A focus on developing a new relationship between local and national government
- The City of Wolverhampton was announced as one of three levelling up flagship areas
- Government identified the city as a place with strong local leadership and ambition

A graphic featuring a dark blue silhouette of the United Kingdom map. The map is set against a background of radiating light beams in shades of blue and red. The words 'LEVELLING UP' are written in large, bold, white capital letters across the center of the map. The word 'LEVELLING' is on the top line, and 'UP' is on the bottom line, with a horizontal white bar underlining 'UP'.

**LEVELLING  
— UP —**

# Levelling Up in Wolverhampton

Page 6



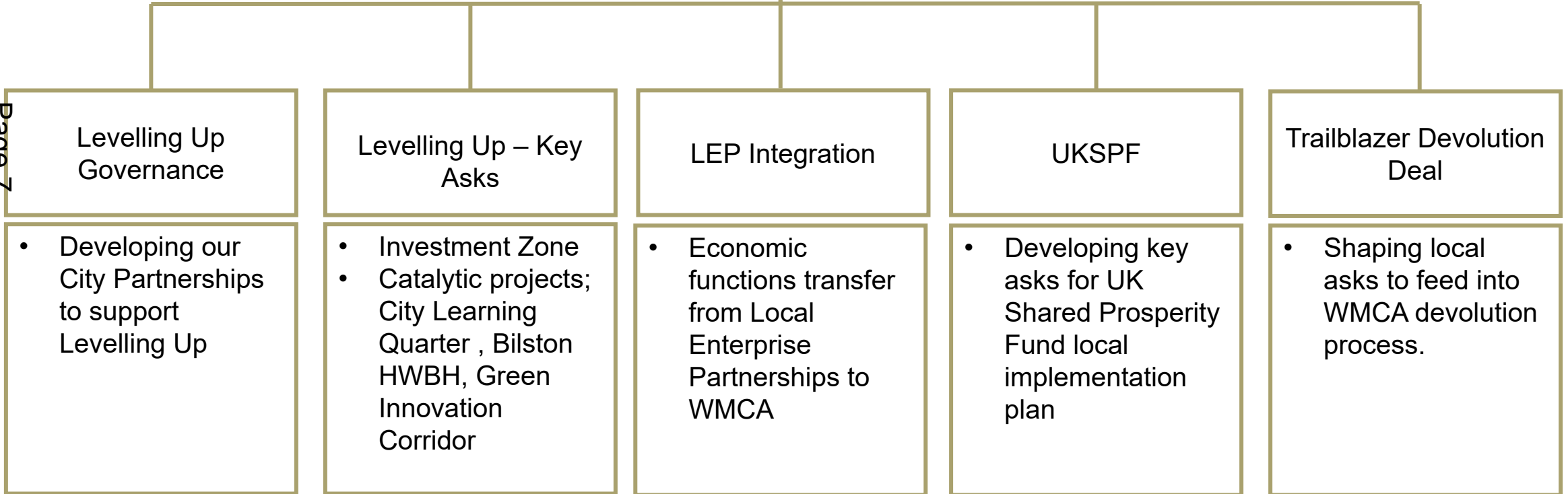
**Our City: Our Plan is our strategic framework for levelling up** – we have one plan for our ‘place’, derived bottom up and collectively owned with clear interface with LU missions

Cabinet endorsed approach to [‘Levelling Up Wolverhampton’](#) on 27 July 2022

# Levelling Up – CWC Programme

## Levelling Up Wolverhampton

Page 7



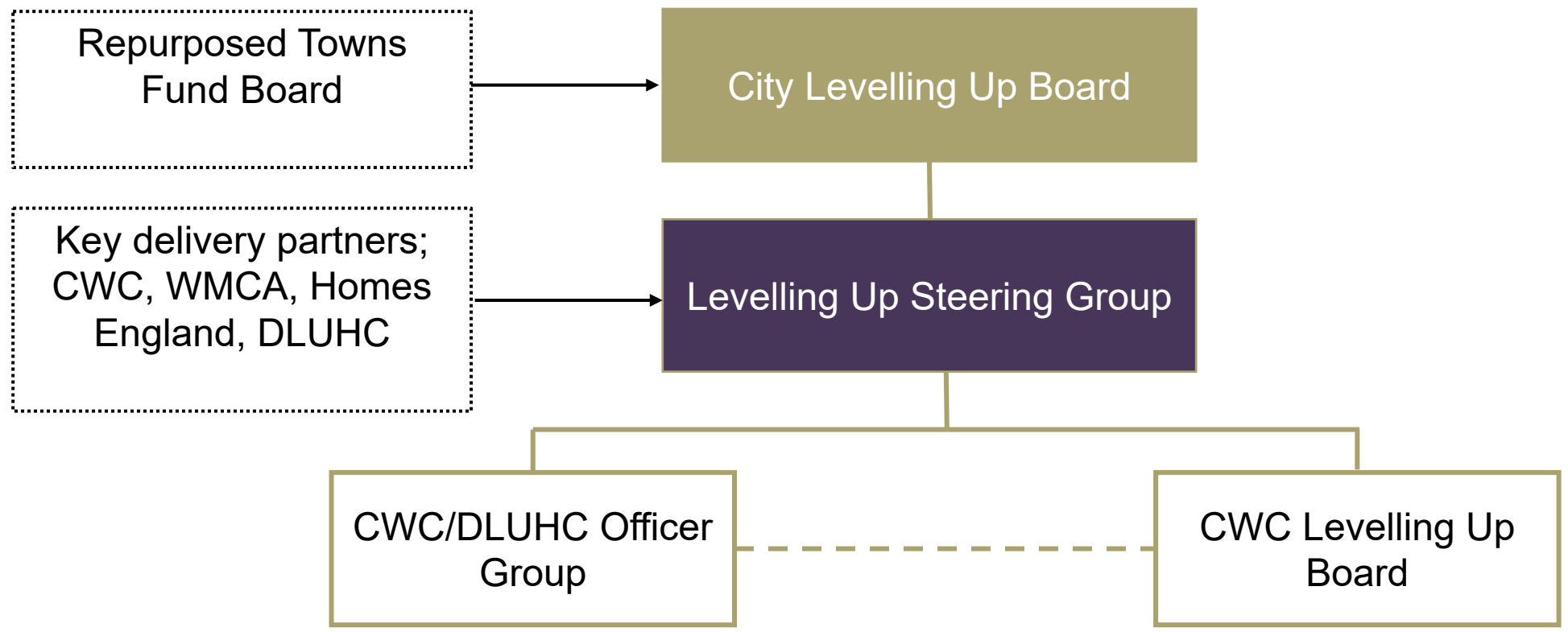
# Levelling Up Governance



# City Levelling Up Governance

## Political Executive

Page 9



# Levelling Up – Key Asks

# Levelling Up – Framework and Key Asks

Page 11

	Good homes in well connected communities	More local people into good jobs and training	Thriving economy in all parts of the city	Healthy, inclusive communities
Challenge	Housing Quality and Supply	Low Skills and High Unemployment	Low Productivity	Health Inequalities
Catalytic Project	City Centre Programme and Key Sites	City Learning Quarter	Green Tech Corridor	Bilston Health and Wellbeing Hub
System Change (policy, pilot and programme)	Private Rented Sector Housing	Education, Skills and Employment System Redesign	Growing the Low Carbon Economy	Place Based Pilot

Not exhaustive. Key will be links into existing activity, TDD proposals and UK SPF to maximise impact.

# Bilston Health and Wellbeing Hub

- Regeneration of Bilston town centre
- A health, care and wellbeing village in the heart of the Bilston Community – HLE expectancy here is lowest in the city
- Co-locates NHS, Social Care, Wellbeing and Leisure service
- Levelling Up Round 2





# Levelling Up – Green Innovation Corridor

The Green Innovation Corridor links Wolverhampton's key assets at the Springfield Campus with those at the University of Wolverhampton Science Park and introduces new development opportunities, incubation space, and improvements to the city's green and blue networks.

Building upon a triple helix model of innovation which looks at the delivery of exemplar partnership interactions between academia (the university), industry and government, the Green Innovation Corridor will generate new employment and incubation space delivering headline outputs of over 200,000 sq ft of new commercial floorspace and incubation space equating to over 1,000 new jobs.



## Proposed outcomes / benefits

\*All outputs /outcomes subject to further development through bid-writing to determine direct vs indirect status.

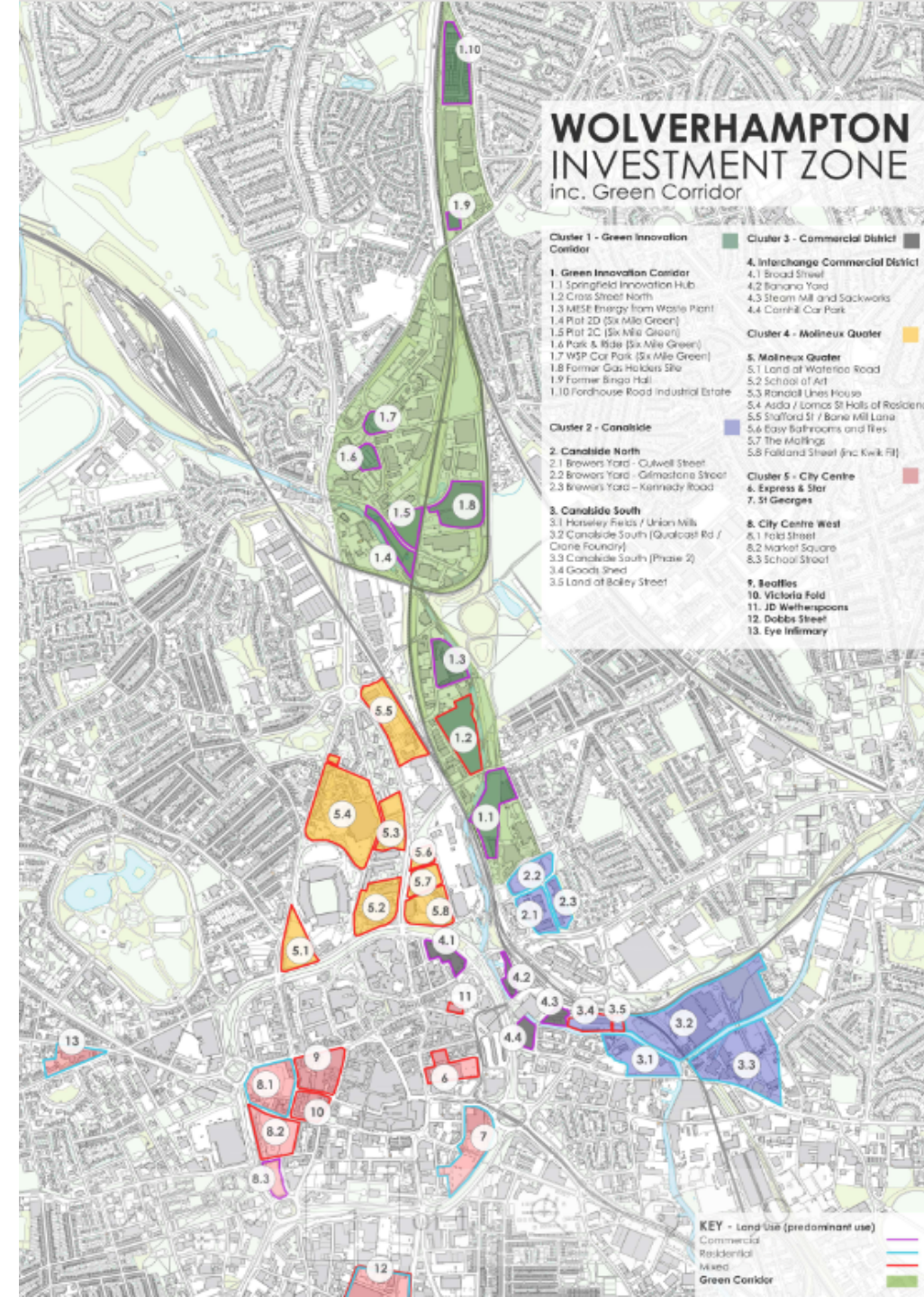
Jobs created	Canal towpath improvements	Benefit Cost Ratio	Area of Brownfield Site Regenerated	New public realm	Business assists	Gross Investment	New commercial floorspace	Floorspace Rationalised
1,047	1.1 km	3:1	6.4 ha	2.56 km	1,000	£225m	18,843 m <sup>2</sup>	12,242 m <sup>2</sup>



# Wolverhampton Investment Zone

Building on key city assets and growing investor confidence to lever in further private sector investment to accelerate green growth in Wolverhampton set over five cluster areas

- **Cluster 1:** Green Innovation Corridor - Building on the LUF2 bid (£20m ask) to accelerate development of new green technologies.
- **Cluster 2:** Canalside - Delivering thousand of low carbon homes in the city centre.
- **Cluster 3:** Interchange Commercial District - Establishing the Commercial District as a centre for green professional services.
- **Cluster 4:** Molineux Quarter – Substantive mixed-use development that provides a comprehensive commercial leisure and residential masterplan for the north of the city centre. Existing partnership framework we can develop to maximise the opportunity.
- **Cluster 5:** City Centre – Mixed use led transformation of city centre.



# City Centre Regeneration

- Building our relationships with key Government partners
- Delivering ‘*ambitious Kings Cross-style regeneration projects*’ in our city
- Investment prospectus – setting out our comprehensive proposals for the city centre



# Local Enterprise Partnership Integration



## LEP Integration

- The Levelling Up White paper also announced significant change for the delivery of economic development functions across the country.
- It proposed that Local Enterprise Partnerships should 'integrate' into local democratic structures.

Page 17

As of the 31 March 2023 the economic development functions of the Black Country Local Enterprise Partnership will fold into the West Midlands Combined Authority.

- Report to Cabinet on the 14 December which sets out the next steps for the Black Country Local Enterprise Partnership, including transition arrangements as it moves into the WMCA e.g. TUPE of staff.

# UK Shared Prosperity Fund

## UK Shared Prosperity Fund

- The UK Shared Prosperity Fund (UK SPF) is intended to replace EU funding, in particular European Regional Development Fund (ERDF) and European Social Fund (ESF)
- UKSPF has 3 funding themes;
  - Place and Communities
  - Supporting Local Business
  - People and Skills
- UK SPF will initially focus on communities and place and local business interventions in 2022-23 and 2023-24. Investment to support people and skills will follow from 2024-25.
- For Wolverhampton, funding will be allocated to and distributed by the West Midlands Combined Authority (WMCA).
- The West Midlands has an allocation of £105.2m (including Multiply) via a national funding formula based on 70% population and 30% need.

## UK Shared Prosperity Fund – Wolverhampton Allocation

Wolverhampton's £3.7 million allocation is broken down across 2022/23, 2023/24 and 2024/25.

2023/24	2023/24	2024/25	TOTAL
£456,226	£912,452	£2,390,625	£3,759,303

Page 20

[UKSPF Report](#) at Cabinet Resources Panel on 16 November 2022 set up delegations to receive grant funding and set out initial distribution over next three years as follows:

- Place & Communities – c.£2.02m
- Local Business Support – £681k
- People & Skills – c.£1.05m
- Multiply - £316k

Wider scrutiny on External Funding to Resources & Equalities Panel in December 2022.



# Trailblazer Devolution Deal

# West Midlands Trailblazer Devolution Deal



- One of the 12 Missions in the Levelling Up White Paper is to:

*Give every part of England that wants it a devolution deal with more regional powers and simplified, long-term funding*

- ‘Trailblazer’ devo deals announced for West Midlands and Greater Manchester
- Ongoing discussions with government departments, informed by work across the region including the [West Midlands Levelling Up Growth Prospectus](#)

## Looking forward – developing the national / local government relationship

- Sustainable and sufficient funding in the longer term
- Reducing the fragmentation of funding pots
- Bringing budgets together in place
- A renewed focus on prevention, backed by government investment



# DLUHC Headquarters in Wolverhampton

Page 24



- Opened September 2021
- Part of the ‘Beyond Whitehall’ programme
- First of its kind outside London
- Ministerial presence and expanding Civil Service in the regions